

Gila NF Precipitation as of 0600 August 21, 2025

35 (+2)

Slaughter Mesa

Jan-Jul – 3.95"

Aug – 0.54"

Gila NF Avg

36 (-12)

25 (-18) Luna

Jan-Jul – 3.96"

Aug – 0.69"

38 (-11) Reserve

Jan - Jul – 3.88"

Aug – 0.76"

Pelona **39 (-15)**

Jan-Jul – 4.24"

Aug – 0.56"

T-Bar

Apr-Jul – 2.47"

Aug – 0.58"

Beaverhead **31 (-12)**

Jan-Jul – 2.98"

Aug – 1.25"

42 (-19) Mogollon

Jan-Jul – 4.71"

Aug – 0.57"

Gila Center **35 (-11)**

Jan-Jul – 4.10"

Aug – 0.43"

44 (-19)

Burro Mt

Jan-Jul – 3.97"

Aug – 0.12"

ERC (Past Week)

Gila NF 2000-2024
Historical Average
Precipitation

Jan-July = 8.91"

Aug = 3.05"

Past 7 Days Actual

Slaughter Mesa – 0.22

Luna – 0.43

Reserve – 0.27

Mogollon – 0.55

Pelona – 0.41

T-Bar – 0.49

Beaverhead – 0.58

Gila Center – 0.33

Burro Mt – 0.04

Gila NF 7 Day Avg = 0.36

Gila NF Aug Average = 0.62

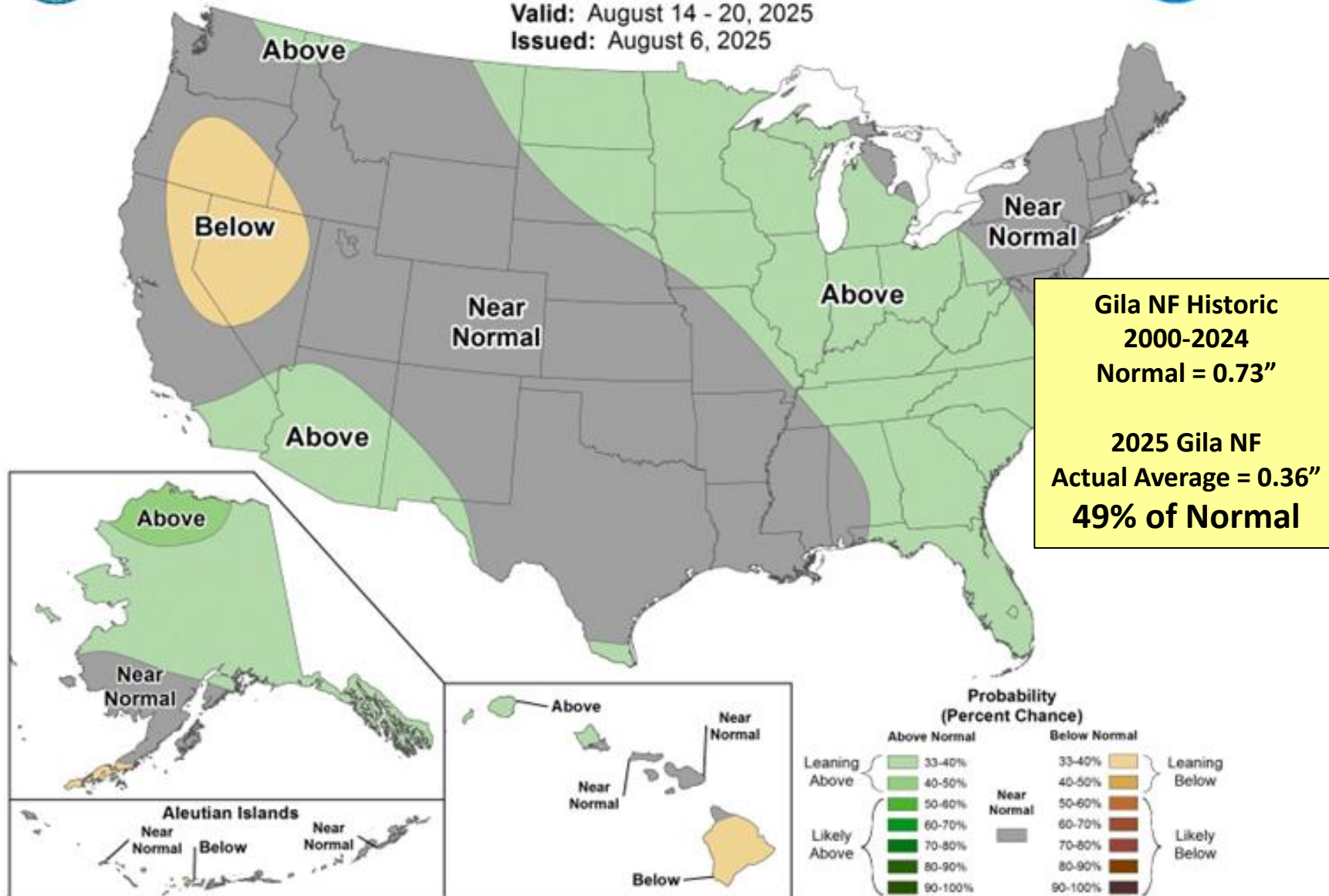
Forecasted Versus Actual Precipitation



8-14 Day Precipitation Outlook

Valid: August 14 - 20, 2025

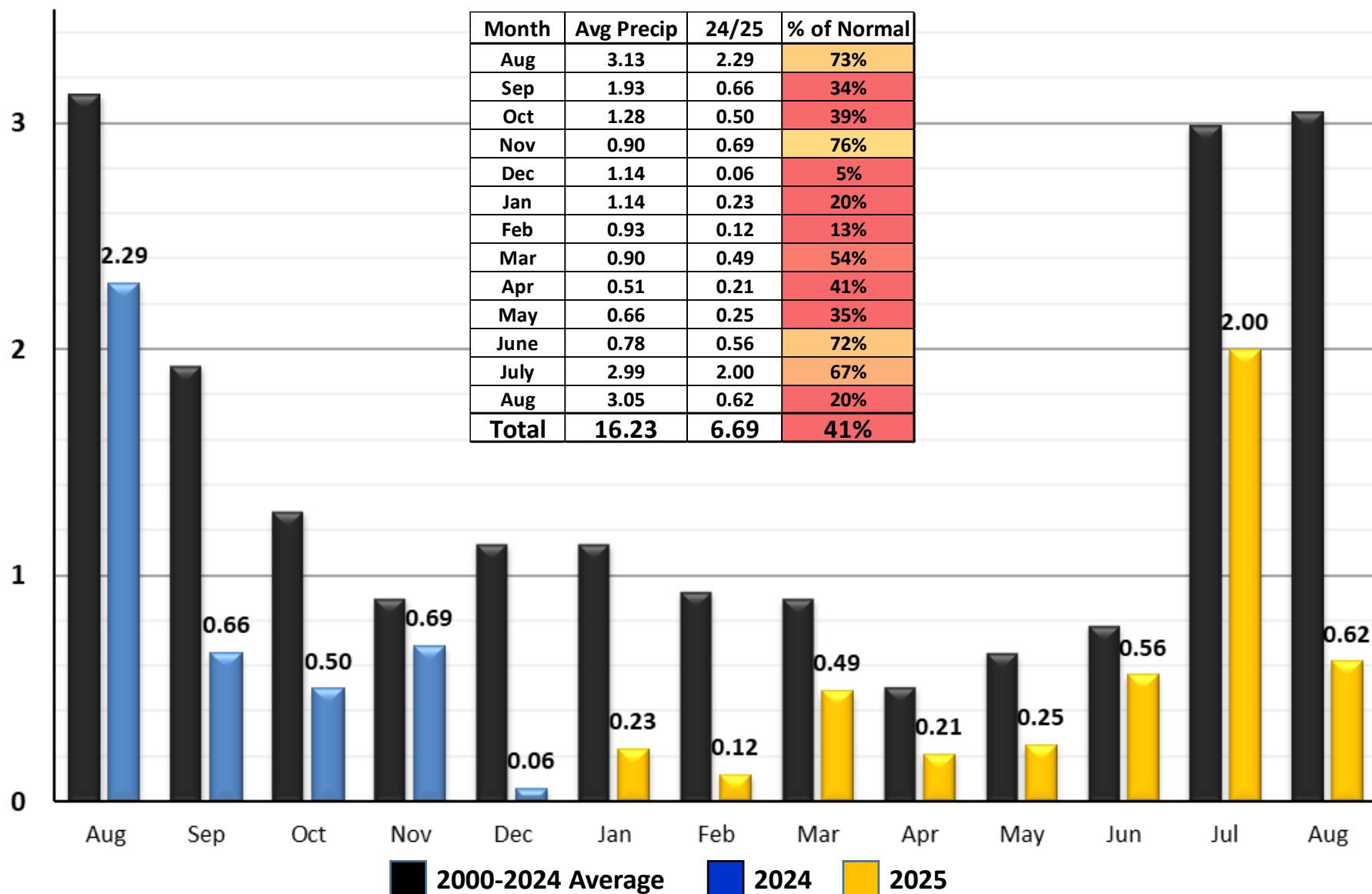
Issued: August 6, 2025



Gila NF Precipitation - Historical Compared to 2024/2025

(All Gila NF RAWS Averaged as of 0600 August 21, 2025)

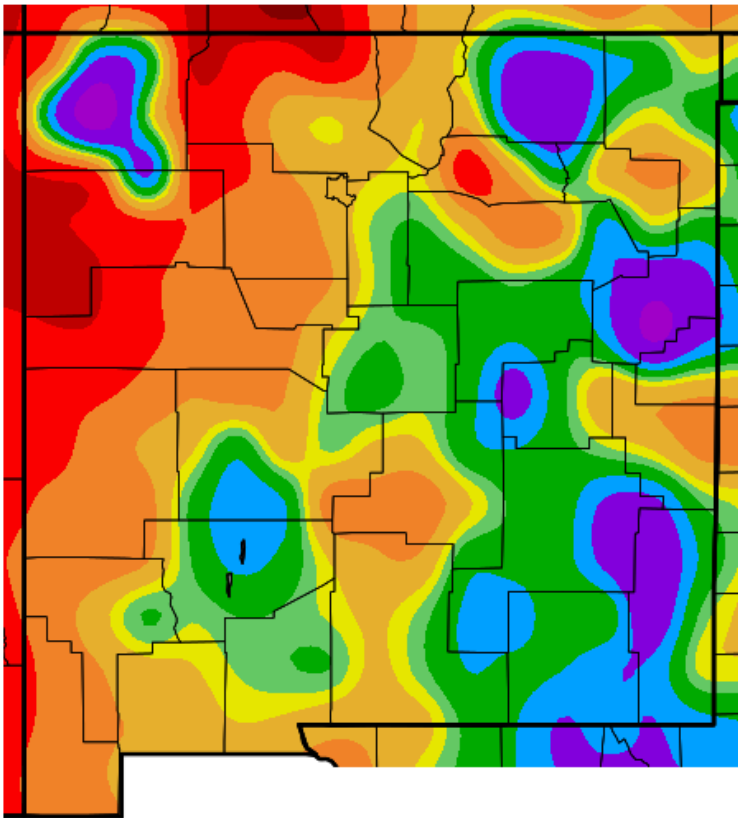
Month	Avg Precip	24/25	% of Normal
Aug	3.13	2.29	73%
Sep	1.93	0.66	34%
Oct	1.28	0.50	39%
Nov	0.90	0.69	76%
Dec	1.14	0.06	5%
Jan	1.14	0.23	20%
Feb	0.93	0.12	13%
Mar	0.90	0.49	54%
Apr	0.51	0.21	41%
May	0.66	0.25	35%
June	0.78	0.56	72%
July	2.99	2.00	67%
Aug	3.05	0.62	20%
Total	16.23	6.69	41%



Precipitation

Past 3 Months

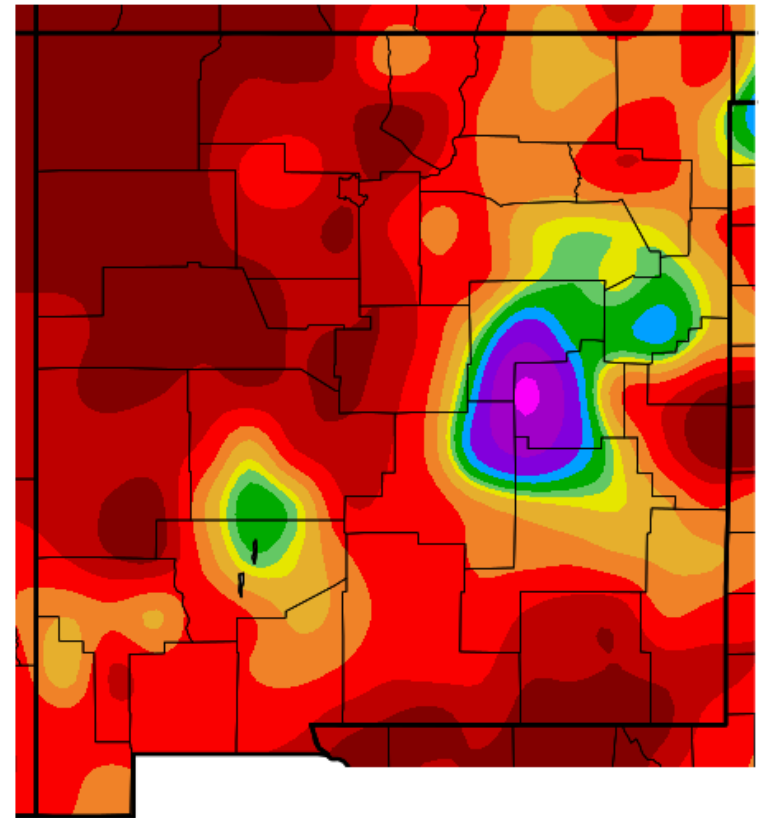
Percent of Average Precipitation (%)
5/22/2025 – 8/19/2025



Generated 8/20/2025 at WRCC using provisional data.
NOAA Regional Climate Centers

August 2025 to Date

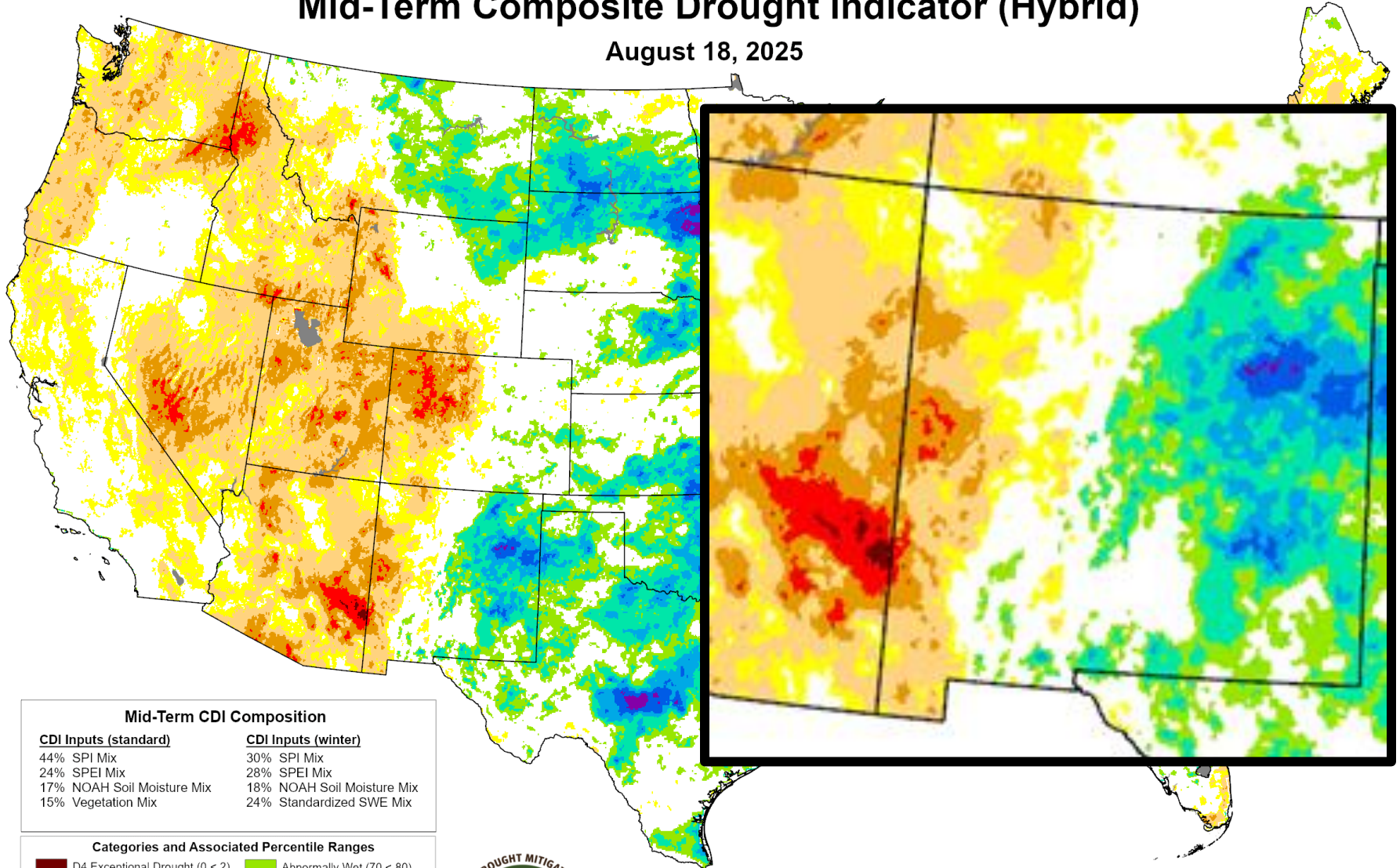
Percent of Average Precipitation (%)
8/1/2025 – 8/19/2025



Generated 8/20/2025 at WRCC using provisional data.
NOAA Regional Climate Centers

Mid-Term Composite Drought Indicator (Hybrid)

August 18, 2025



Mid-Term CDI Composition

CDI Inputs (standard)

44% SPI Mix
24% SPEI Mix
17% NOAA Soil Moisture Mix
15% Vegetation Mix

CDI Inputs (winter)

30% SPI Mix
28% SPEI Mix
18% NOAA Soil Moisture Mix
24% Standardized SWE Mix

Categories and Associated Percentile Ranges

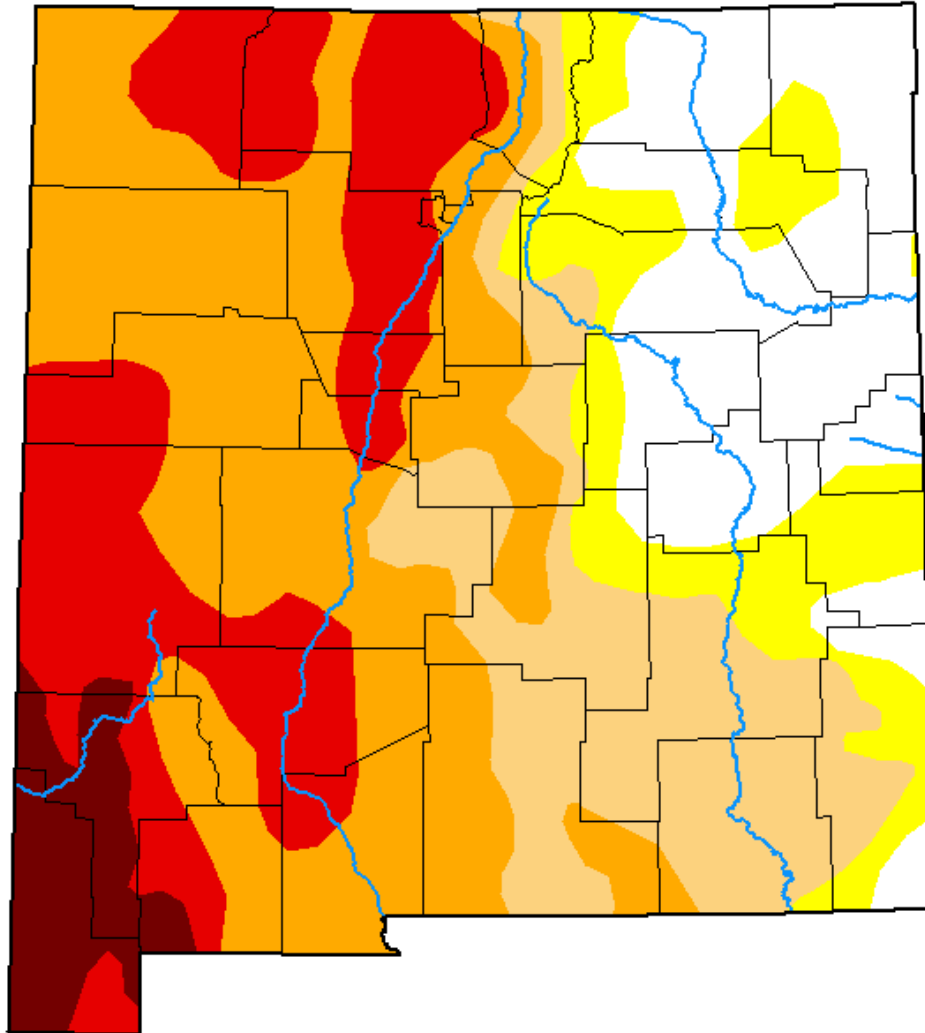
D4 Exceptional Drought (0 < 2)	Abnormally Wet (70 < 80)
D3 Extreme Drought (2 < 5)	Moderately Wet (80 < 90)
D2 Severe Drought (5 < 10)	Severely Wet (90 < 95)
D1 Moderate Drought (10 < 20)	Extremely Wet (95 < 98)
D0 Abnormally Dry (20 < 30)	Exceptionally Wet (98 - 100)
Near Normal (30 < 70)	No Data



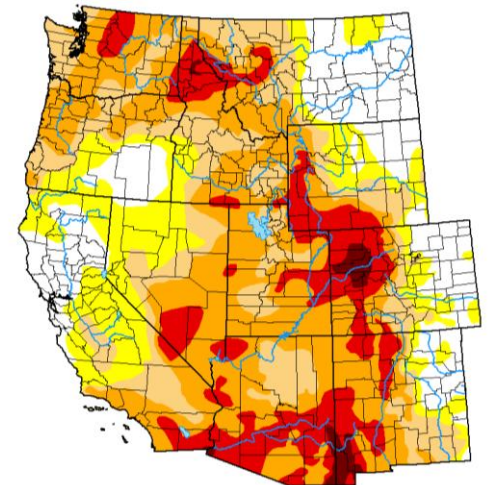
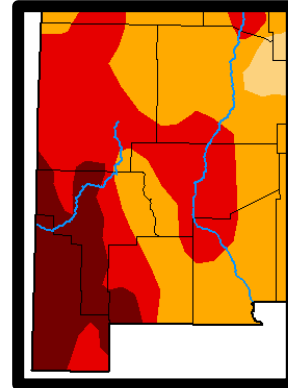
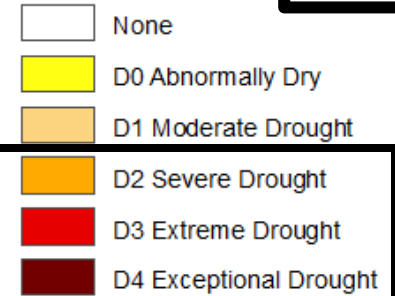
U.S. Drought Monitor New Mexico

August 19, 2025
(Released Thursday, Aug. 21, 2025)
Valid 8 a.m. EDT

Last Week

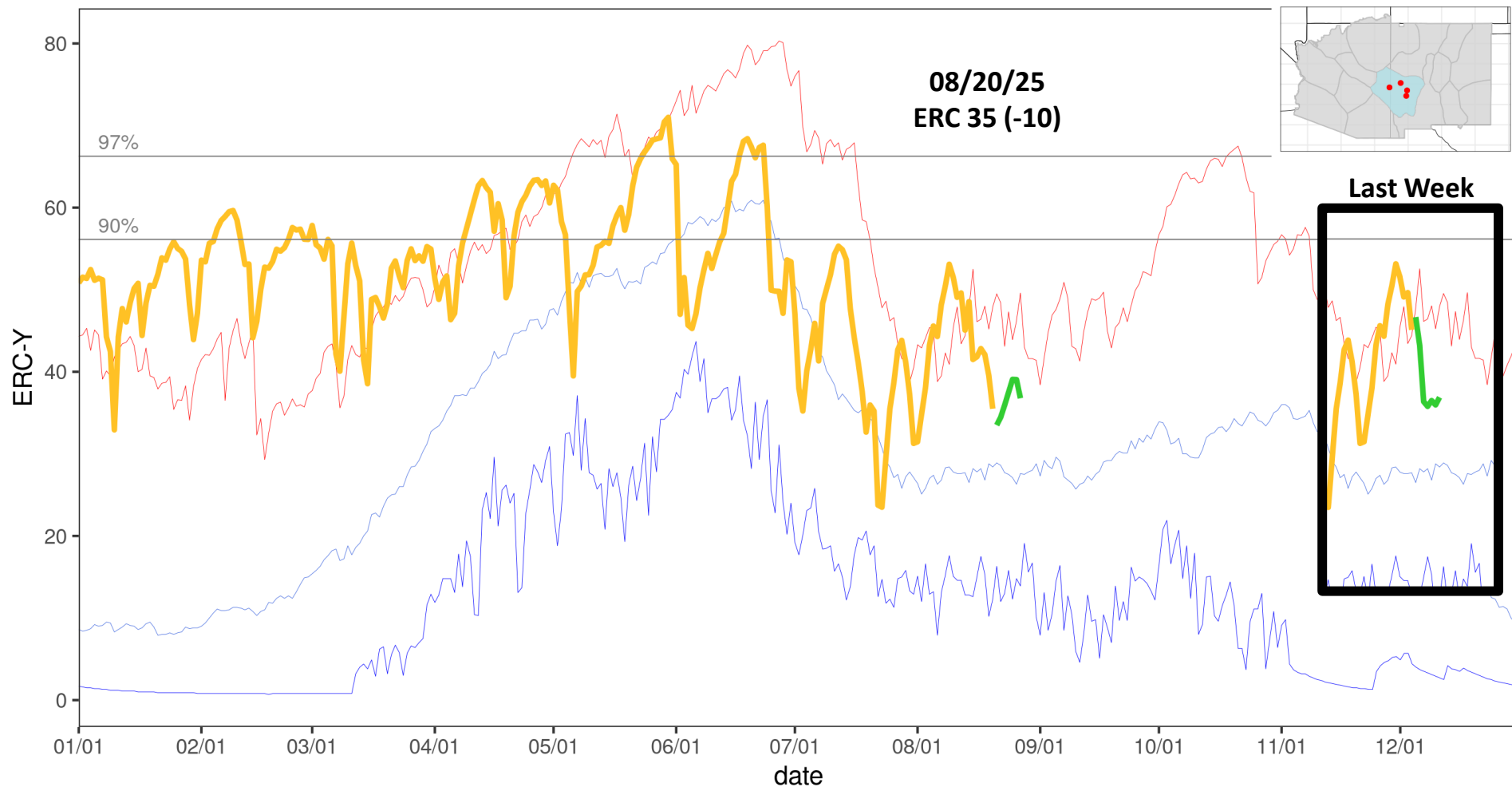


Intensity:



Energy Release Component (Fuel Model Y): PSA SW-08

Alpine/ Slaughter/Pelona/Beaverhead

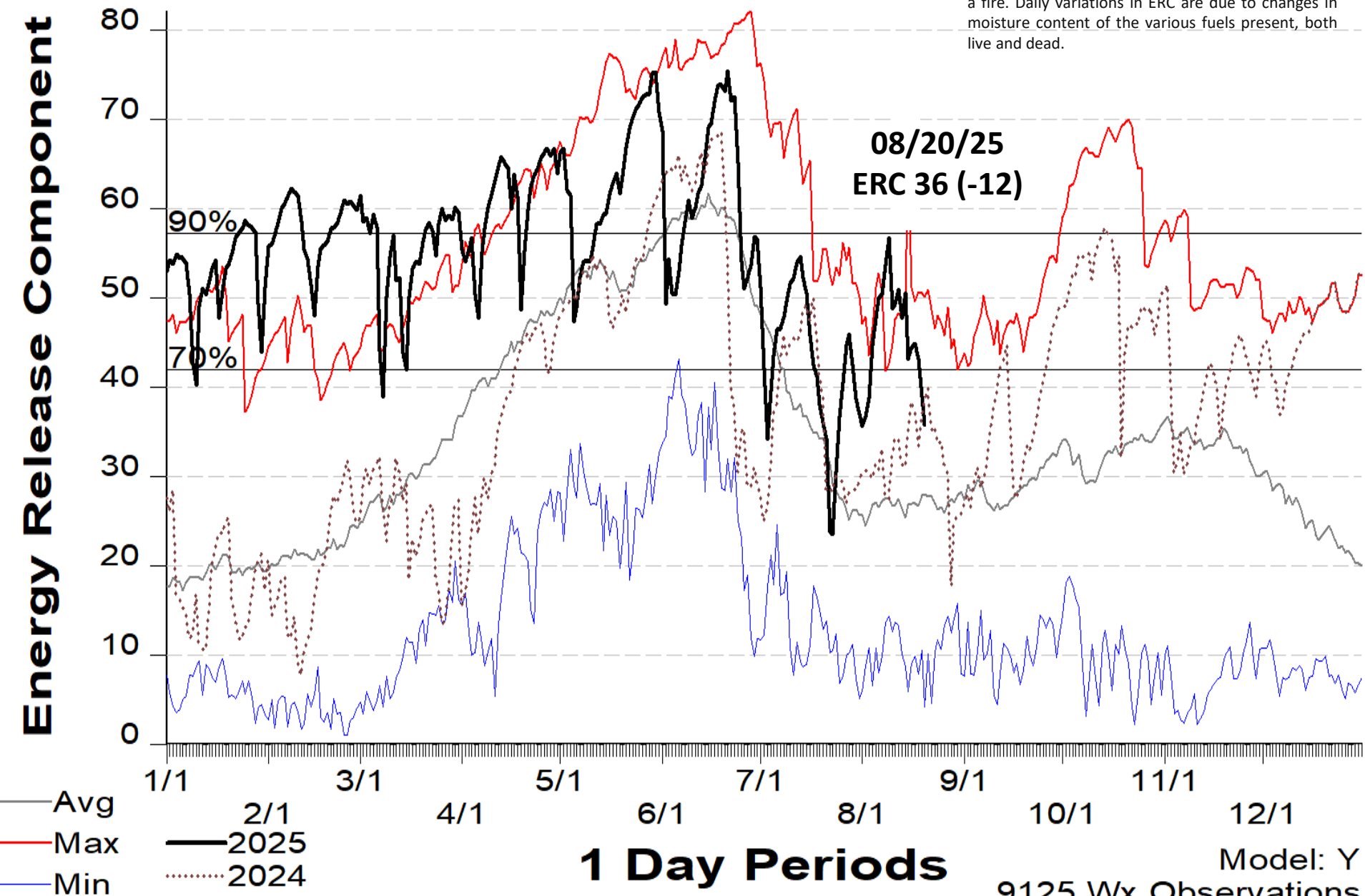


Avg Min Max 2025 Forecasted

SIG - Gila NF 2000 - 2024

The **energy release component** (ERC) is a number related to the available **energy** (BTU) per unit area (square foot) within the flaming front at the head of a fire. Daily variations in ERC are due to changes in moisture content of the various fuels present, both live and dead.

Energy Release Component



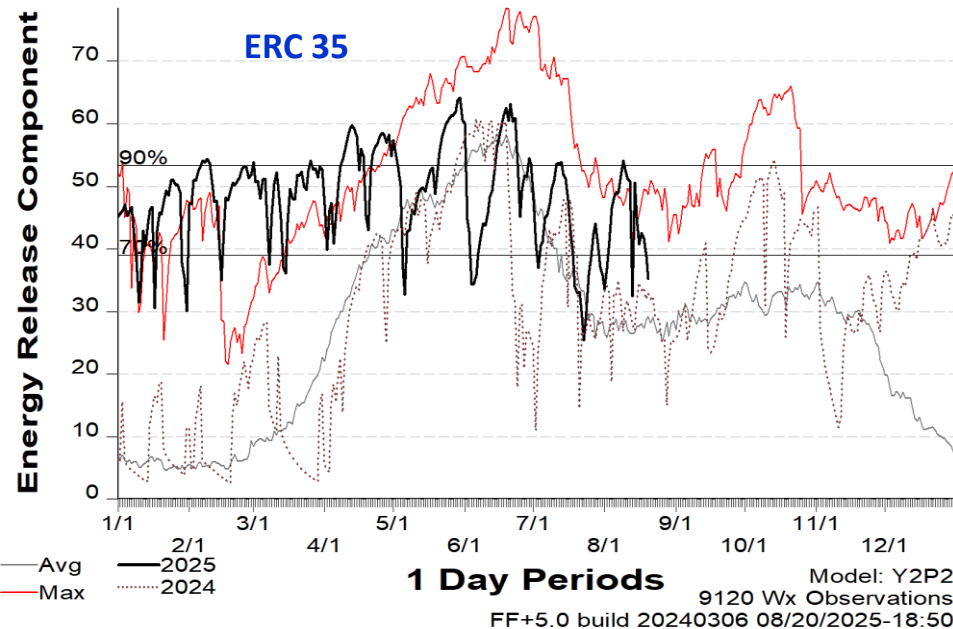
1 Day Periods

Model: Y

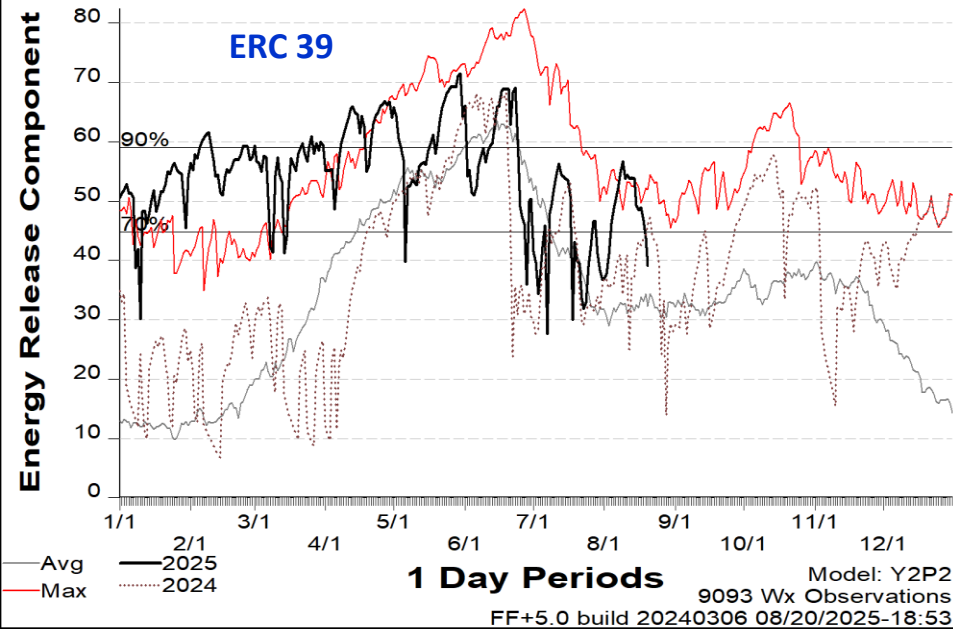
9125 Wx Observations

FF+5.0 build 20240306 08/20/2025-18:44

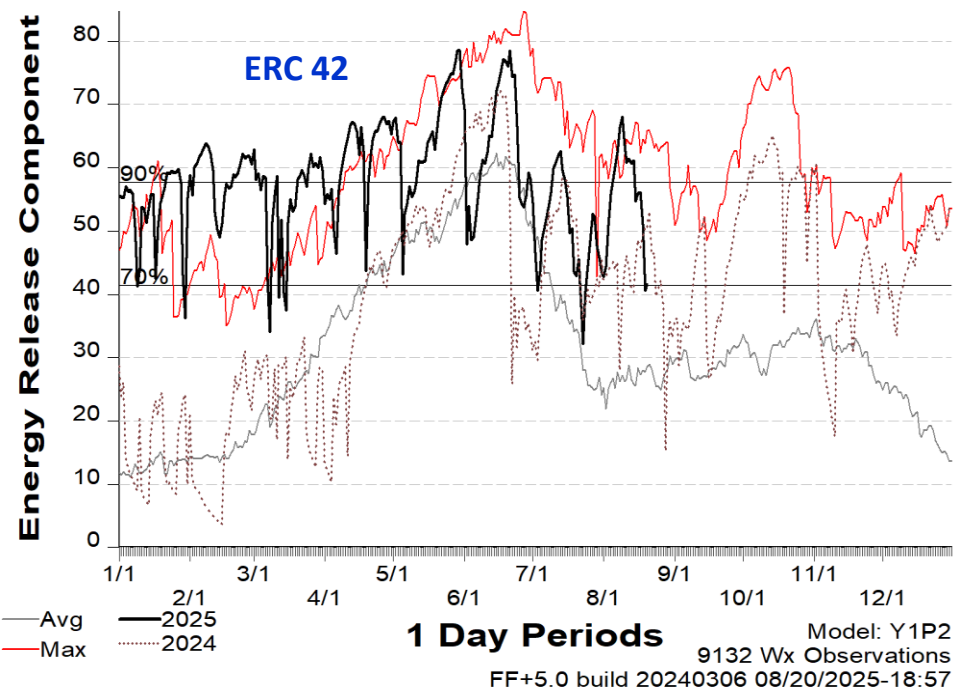
292008-SLAUGHTER MESA
2000 - 2024



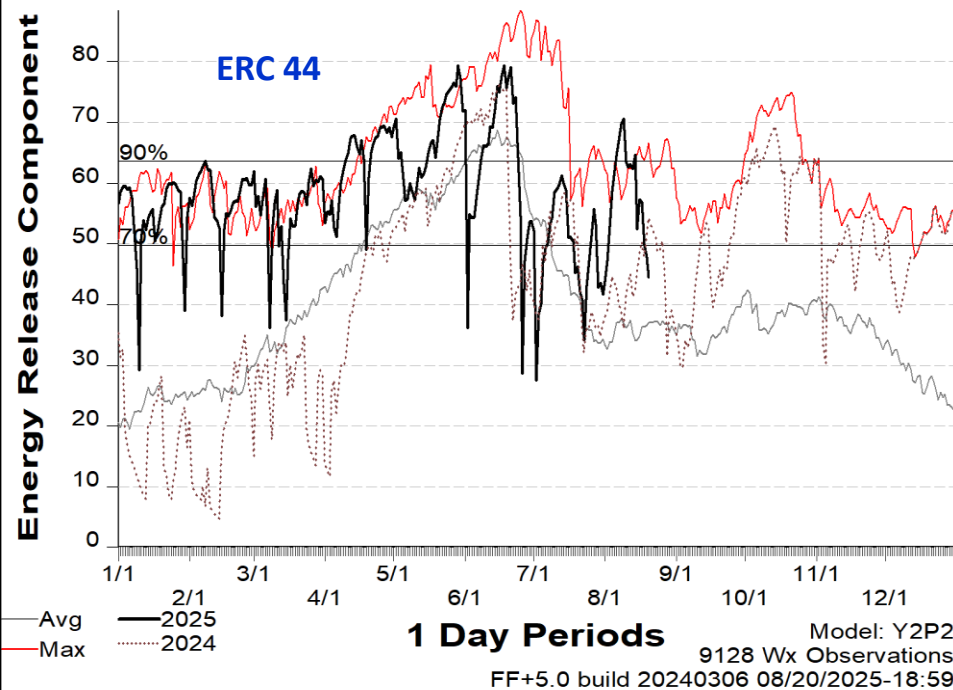
292009-PELONA
2000 - 2024

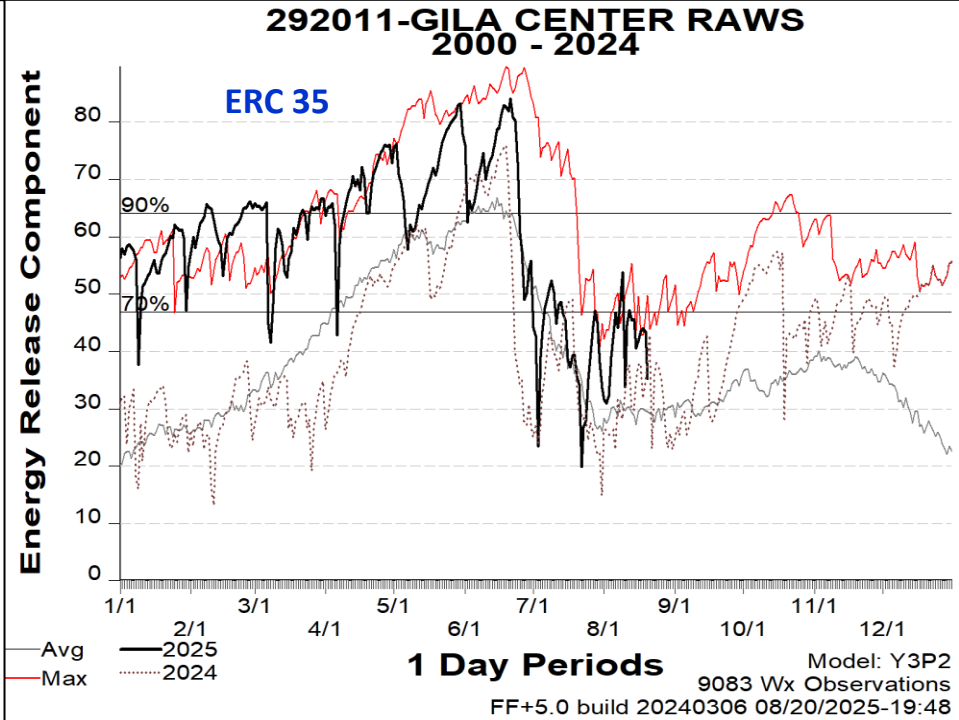
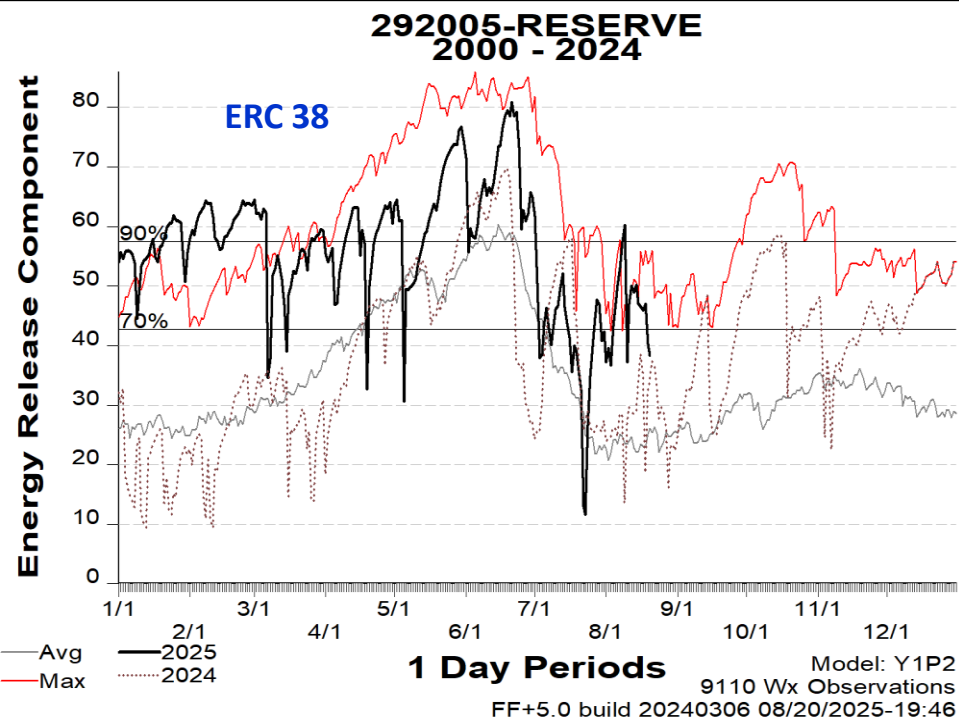
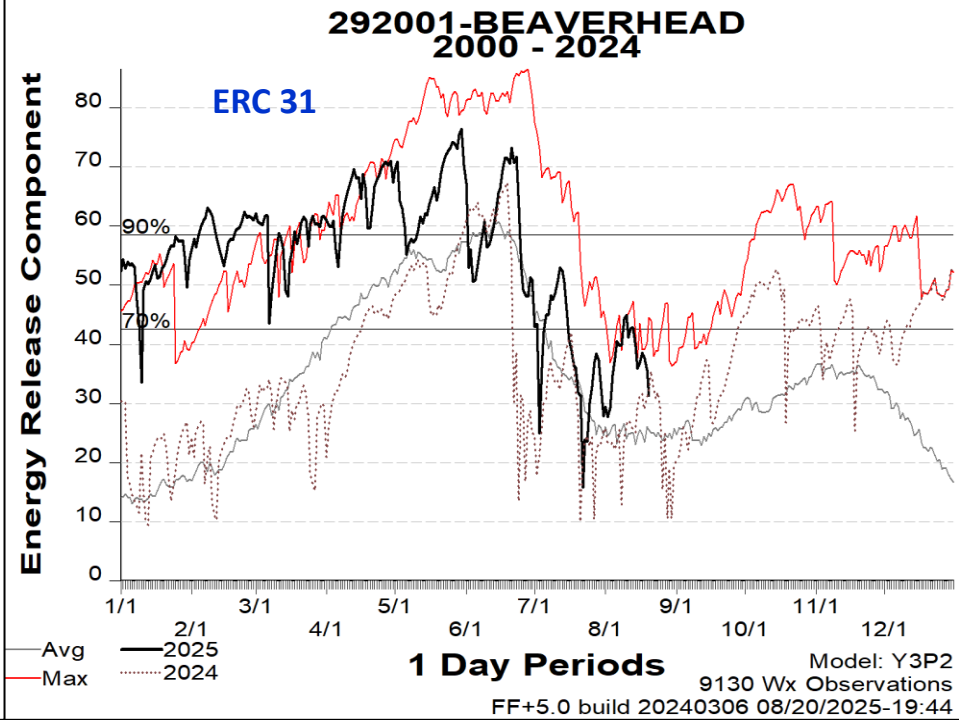
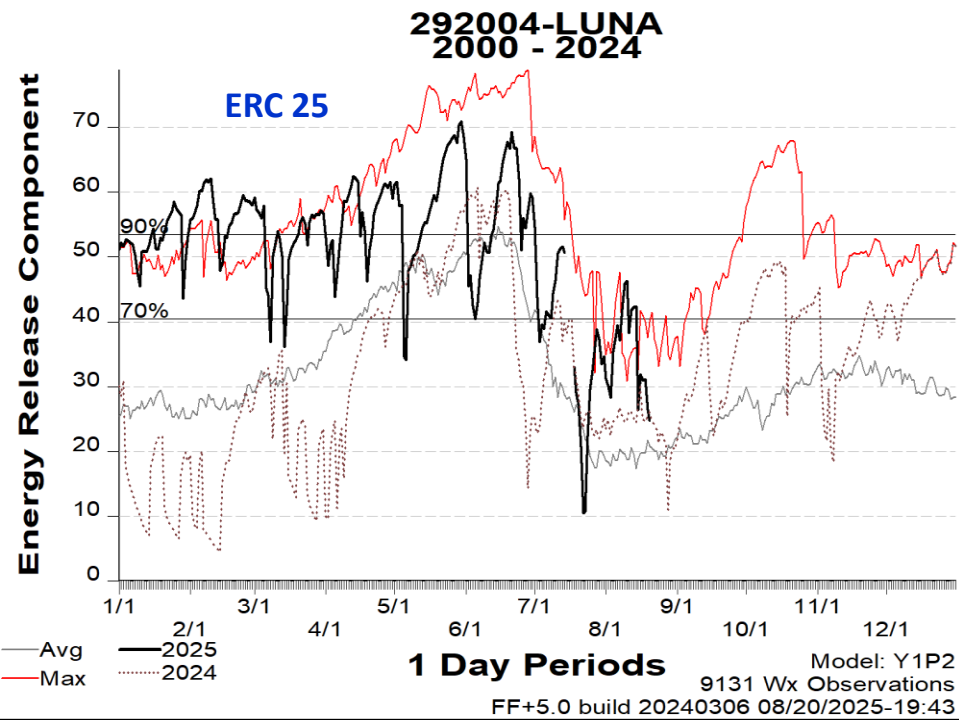


292013-MOGOLLON
2000 - 2024



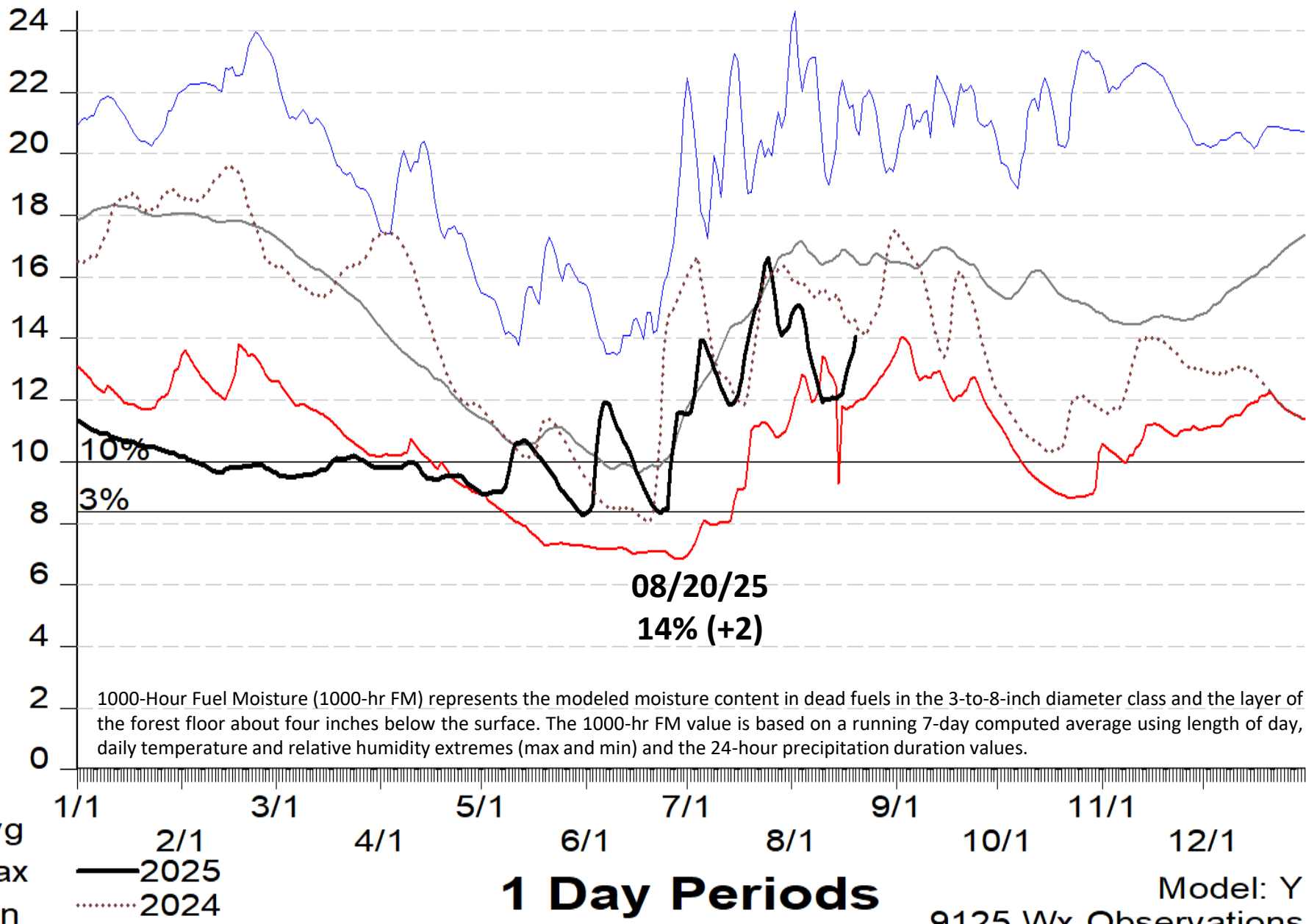
292504-BURRO MOUNTAIN
2000 - 2024





SIG - Gila NF 2000 - 2024

1000-Hour Fuel Moisture



1 Day Periods

Model: Y

9125 Wx Observations

FF+5.0 build 20240306 08/20/2025-18:44

National Weather Service NEW MEXICO FIRE WEATHER ZONE 110 – 082120250535

DISCUSSION...

- High pressure aloft, to our north is spinning in drier air from the NE today. This means a significant lowering of rain and storm chances over the Sacramento mountains, Far West Texas, and the NM lowlands from the Rio Grande eastward.
- Temperatures will continue 2-4 degrees warmer than average through the weekend.
- RH will be dropping through the rest of the week as drier air moves over all but the Gila region. Thus dry most areas through Sunday/Monday, with only the Gila seeing continuing rain/storm chances.
- Winds will be light overnight, with typical occasional afternoon breezes.
- Moisture return next MON/TUE, with increasing rain and storm chances for all areas TUE and WED.

NM Weather Zone 110		Sky Weather	RH Recovery 0100-0800	Max Temp	Min RH	Wind Dir	Wind Speed	Prob of Precip
21-Aug	Thu	Mostly Sunny to Partly Cloudy w/ a Chance of PM T-Storms	60-75% Ridges 90-100% Valley	82-92°	23-33%	Var	5-10	0-50%
22-Aug	Fri	Mostly Sunny to Partly Cloudy w/ a Chance of PM T-Storms	50-70% Ridges 75-95% Valley	83-93°	18-28%	S	5-10	0-30%
23-Aug	Sat	Mostly Sunny to Partly Cloudy w/ a Chance of PM T-Storms	40-60% Ridges 70-85% Valley	83-93°	15-25%	S	5-10	0-50%

13 Miles W Pie Town NM










Quemado NM

Today	Tonight	Friday	Friday Night	Saturday	Saturday Night	Sunday	Sunday Night	Monday
								
High: 88 °F	Low: 58 °F	High: 88 °F	Low: 58 °F	High: 86 °F	Low: 58 °F	High: 84 °F	Low: 58 °F	High: 84 °F
Sunny then Chance T-storms	Chance T-storms then Partly Cloudy	Mostly Sunny then Chance T-storms	Slight Chance T-storms then Partly Cloudy	Sunny then T-storms Likely	Chance T-storms then Mostly Cloudy	Mostly Sunny then Chance T-storms	Chance T-storms then Mostly Cloudy	Mostly Sunny then Chance T-storms

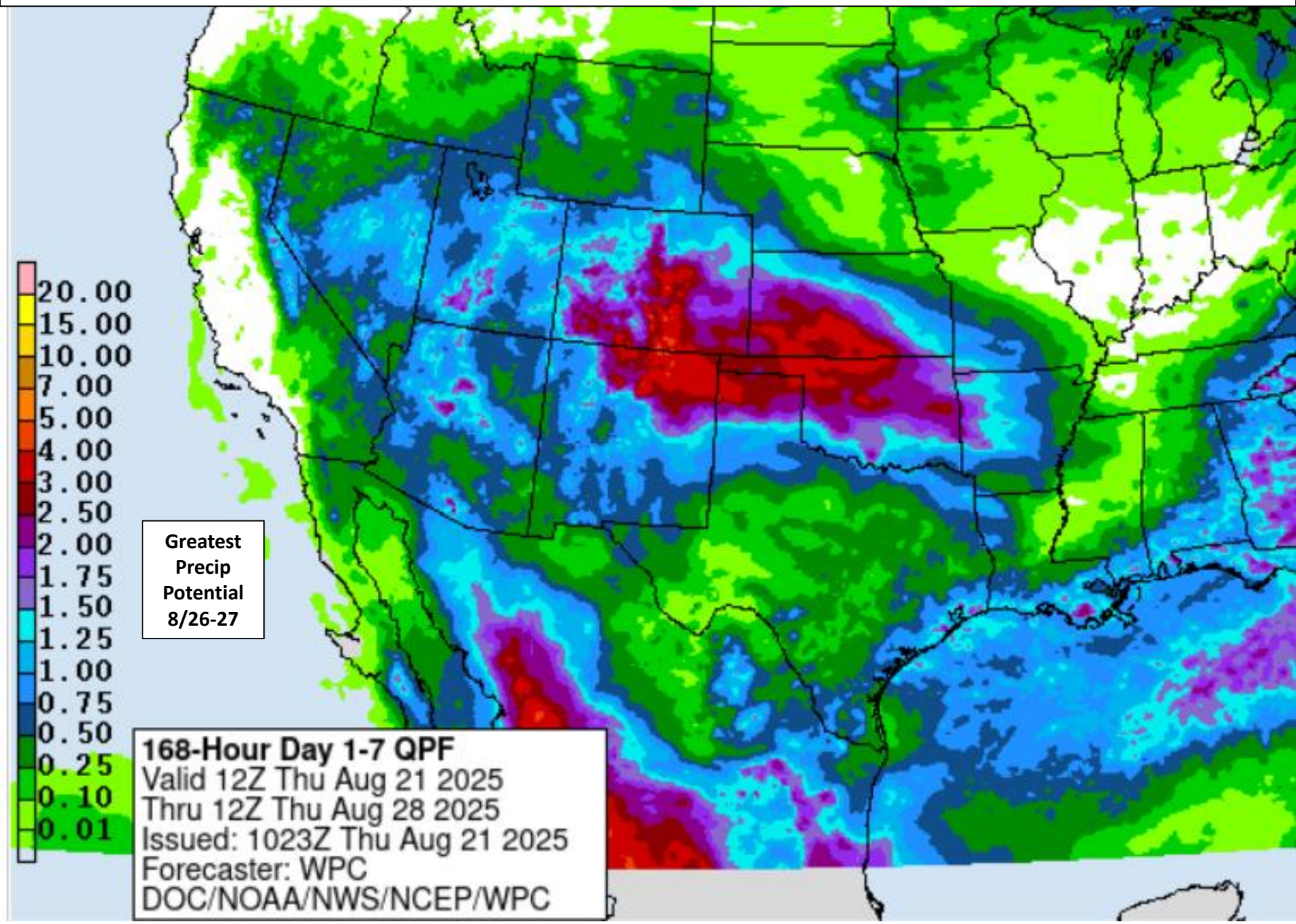
Reserve NM

Today	Tonight	Friday	Friday Night	Saturday	Saturday Night	Sunday	Sunday Night	Monday
								
High: 91 °F	Low: 55 °F	High: 92 °F	Low: 56 °F	High: 92 °F	Low: 55 °F	High: 90 °F	Low: 54 °F	High: 90 °F
Sunny then Chance T-storms	Chance T-storms then Partly Cloudy	Mostly Sunny then Chance T-storms	Slight Chance T-storms then Partly Cloudy	Sunny then Chance T-storms	Slight Chance T-storms then Mostly Cloudy	Sunny then Slight Chance T-storms	Mostly Cloudy	Sunny then Chance T-storms

Silver City NM

Today	Tonight	Friday	Friday Night	Saturday	Saturday Night	Sunday	Sunday Night	Monday
								
High: 87 °F	Low: 63 °F	High: 87 °F	Low: 63 °F	High: 88 °F	Low: 62 °F	High: 87 °F	Low: 62 °F	High: 87 °F
Sunny then Scattered T-storms	Isolated T-storms then Mostly Clear	Sunny then Isolated T-storms	Mostly Clear	Sunny then Slight Chance T-storms	Partly Cloudy	Sunny	Mostly Clear	Sunny then Slight Chance T-storms

QUANTITATIVE PRECIPITATION FORECAST – 7-Day Total, August 21-28, 2025



Southwest Region – 7-Day Significant Wildland Fire Potential Outlook

ERC

Published: Aug 21, 2025 9:05:42 AM MT

Little or
NO Risk

LOW RISK

MOD Risk

Lightning

Windy

Predictive Service Area (PSA)	Wed 20 Aug	Thu 21 Aug	Fri 22 Aug	Sat 23 Aug	Sun 24 Aug	Mon 25 Aug	Tue 26 Aug	Wed 27 Aug
SW01 - Northwest AZ	55	55	55	47	34	26	20	17
SW02 - West-Central AZ	70	69	69	64	56	53	45	41
SW03 - Southwest AZ	82	83	84	80	79	77	73	68
SW04 - Four Corners Area	55	55	55	54	52	50	49	47
SW05 - Western Mogollon Rim	47	44	44	40	34	33	31	24
SW06N - Central AZ/Phoenix Metro	75	74	73	73	73	74	71	68
SW06S - Southeast AZ	45	46	49	50	52	52	49	44
SW07 - Northwest NM Mtns.	45	44	44	45	38	35	31	29
SW08 - White Mtns. & Gila Region	35	33	34	36	37	39	39	36
SW09 - South/Central NM Lowlands	41	41	45	49	51	54	54	49
SW10 - Sangre De Cristo Mountains	36	33	33	35	33	29	27	25
SW11 - Central NM Mtns. & Plains	36	34	37	40	41	42	43	37
SW12 - South-Central Nm Mtns.	21	21	23	26	28	29	29	25
SW13 - Northeast NM/NW TX	31	32	33	35	36	36	32	28
SW14N - Southeast NM/West TX	37	35	38	41	43	45	42	37

Northern Gila NF

Quemado Lake
Weekly Summary

	Thu Aug 21	Fri Aug 22	Sat Aug 23	Sun Aug 24	Mon Aug 25	Tue Aug 26	Wed Aug 27
Max Temp, °F	85	84	82	80	80	78	74
Min Temp, °F	58	58	58	58	58	56	55
Max RH, %	71	69	62	59	54	62	72
Min RH, %	25	23	25	24	22	27	36
Max Dewpoint, °F	49	49	47	47	45	46	47
Min Dewpoint, °F	44	42	42	39	38	40	45
Max Wind, mph	8	5	6	5	6	6	6
Min Wind, mph	1	2	2	2	2	2	2
Max Wind Gust, time/dir.	6 PM ↙	5 PM ↖	6 PM ↗	12 PM ↗	5 PM ↗	12 PM ↗	12 PM ↗
Max Wind Gust, mph	12	7	8	7	8	8	8
Min Wind Gust, mph	1	3	3	3	3	3	3
Max Cloud Cover, %	76	70	74	79	70	82	84
Min Cloud Cover, %	8	12	21	34	28	45	53
Max Prob. of Precip., %	40	29	57	36	45	65	73
Max Mixing Height, ft	11500	12000	11000	9500	10500	10500	5000
Min Mixing Height, ft	0	0	0	0	0	0	0
Max Ventilation Rate, kt-ft	104	81	55	45	53	116	27
Min Ventilation Rate, kt-ft	0	0	0	0	0	0	0

Southern Gila NF

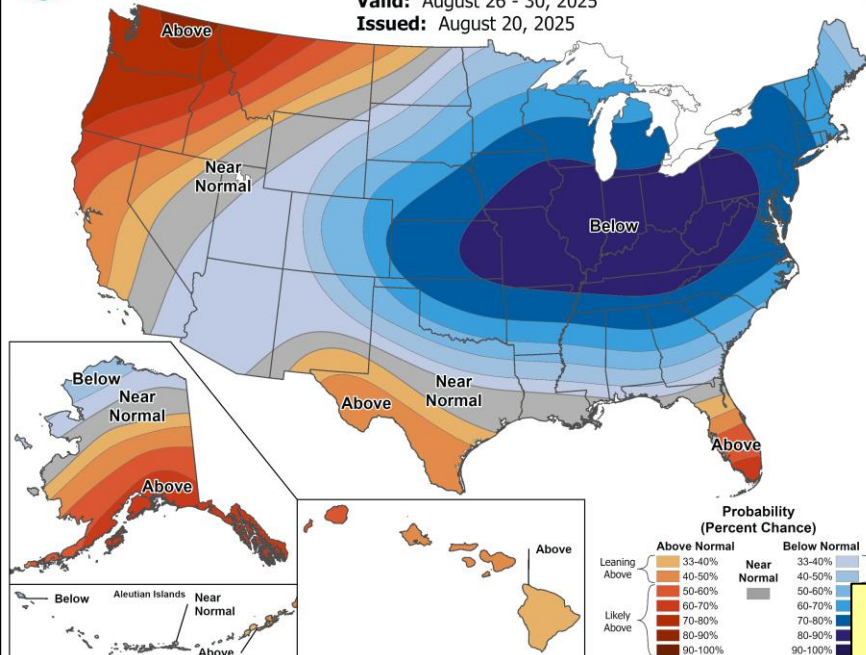
White Signal, NM
Weekly Summary

	Thu Aug 21	Fri Aug 22	Sat Aug 23	Sun Aug 24	Mon Aug 25	Tue Aug 26	Wed Aug 27
Max Temp, °F	88	87	87	87	87	83	78
Min Temp, °F	66	65	65	65	65	64	62
Max RH, %	63	50	43	40	40	55	70
Min RH, %	25	22	19	19	19	27	37
Max Dewpoint, °F	54	48	44	43	43	51	53
Min Dewpoint, °F	46	42	39	39	39	43	49
Max Wind, mph	10	10	12	13	12	10	10
Min Wind, mph	6	6	6	9	9	8	9
Max Wind Gust, time/dir.	2 PM ↖	1 PM ↖	3 PM ↖	1 PM ↖	4 PM ↗	2 PM ↑	3 PM ↑
Max Wind Gust, mph	18	20	21	23	21	20	20
Min Wind Gust, mph	10	9	12	15	16	13	14
Max Cloud Cover, %	33	33	23	27	43	54	51
Min Cloud Cover, %	4	4	5	4	11	39	34
Max Prob. of Precip., %	27	12	8	4	23	45	61
Max Mixing Height, ft	9134	10350	11692	10133	10749	9061	5982
Min Mixing Height, ft	419	0	0	0	0	271	349
Max Ventilation Rate, kt-ft	119	104	114	122	107	90	54
Min Ventilation Rate, kt-ft	2	0	0	0	0	2	3



6-10 Day Temperature Outlook

Valid: August 26 - 30, 2025
Issued: August 20, 2025

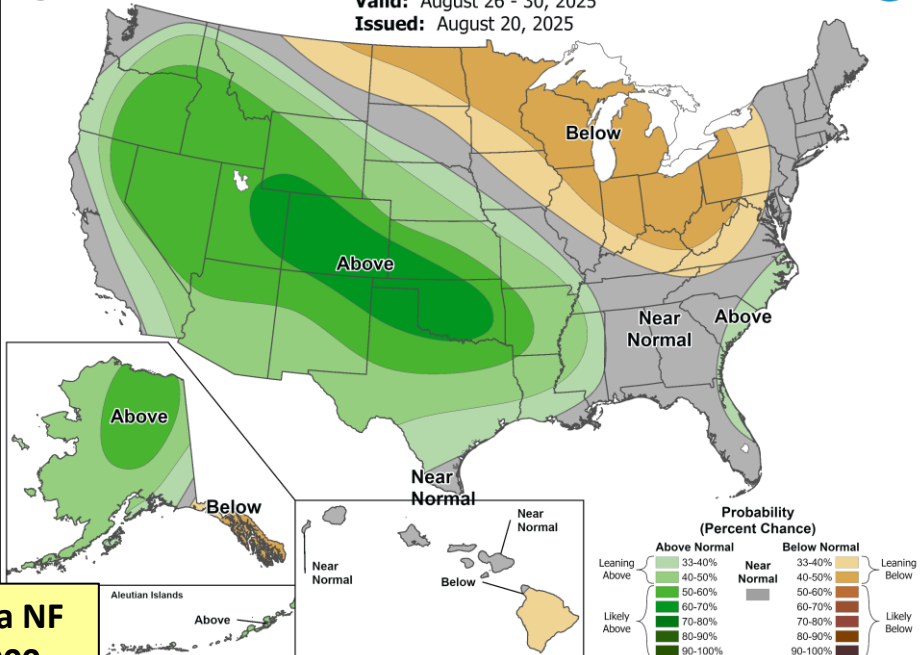


**Gila NF
2000-
2024
Normal
= 0.70"**



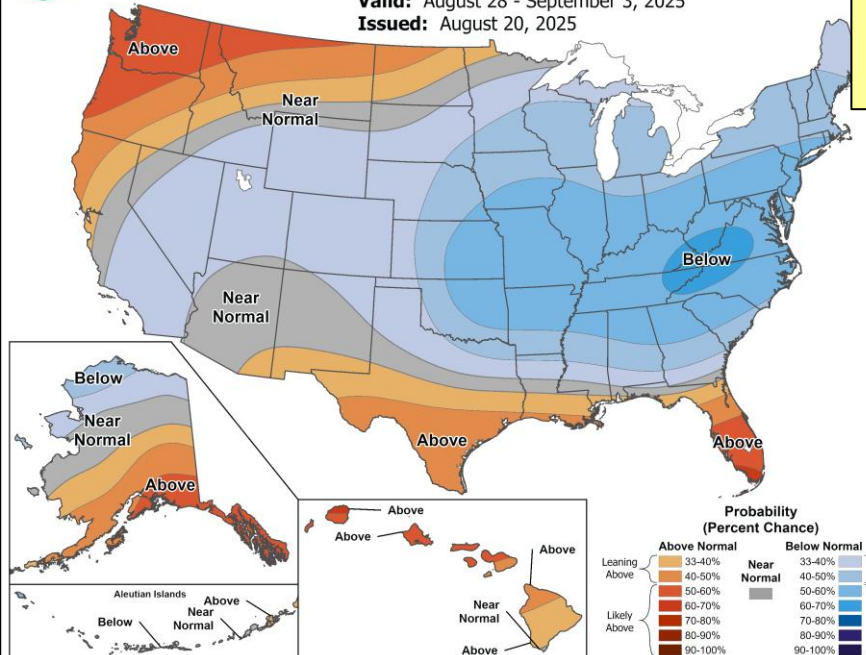
6-10 Day Precipitation Outlook

Valid: August 26 - 30, 2025
Issued: August 20, 2025



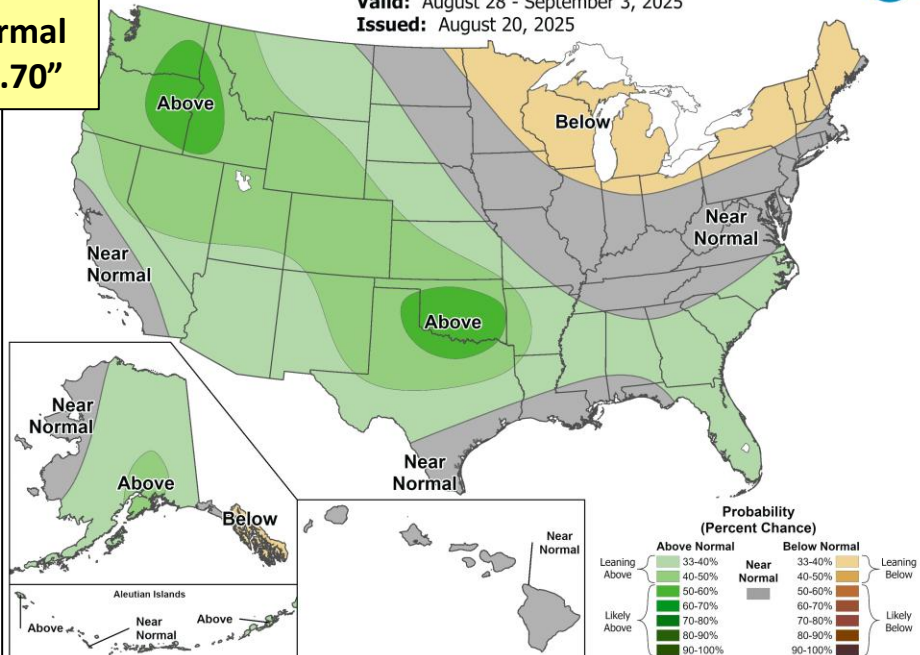
8-14 Day Temperature Outlook

Valid: August 28 - September 3, 2025
Issued: August 20, 2025



8-14 Day Precipitation Outlook

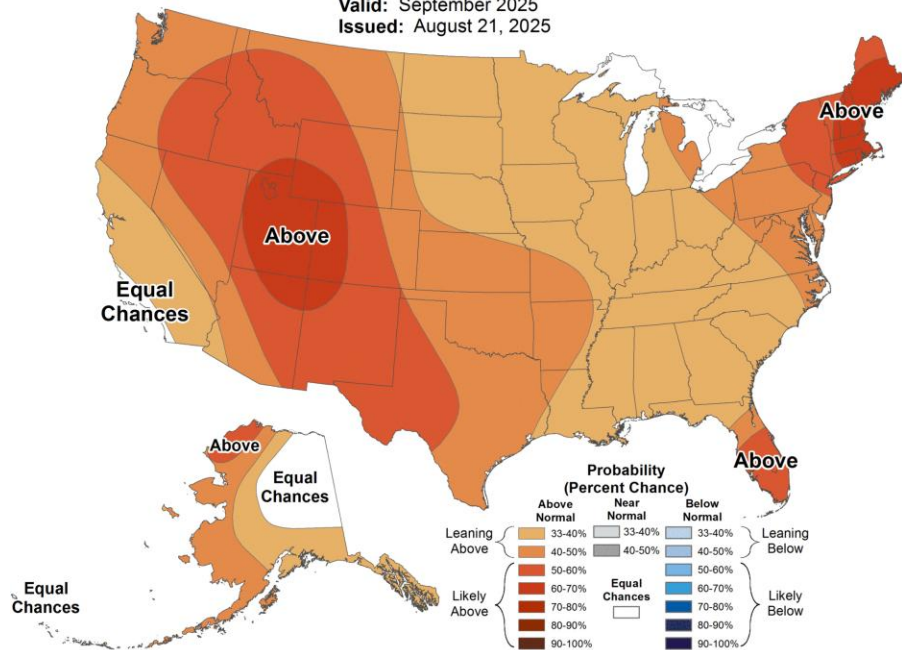
Valid: August 28 - September 3, 2025
Issued: August 20, 2025





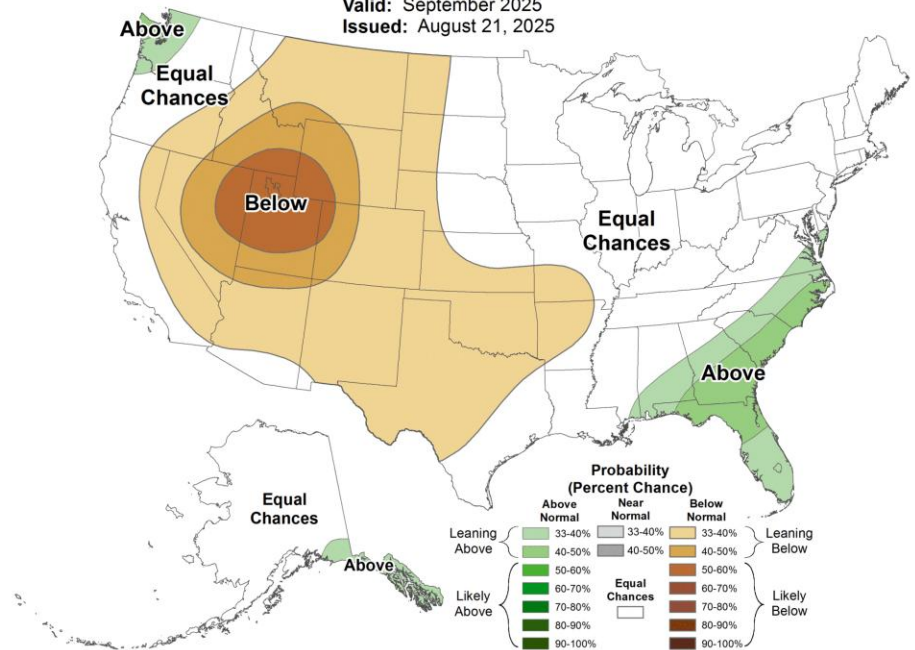
Monthly Temperature Outlook

Valid: September 2025
Issued: August 21, 2025



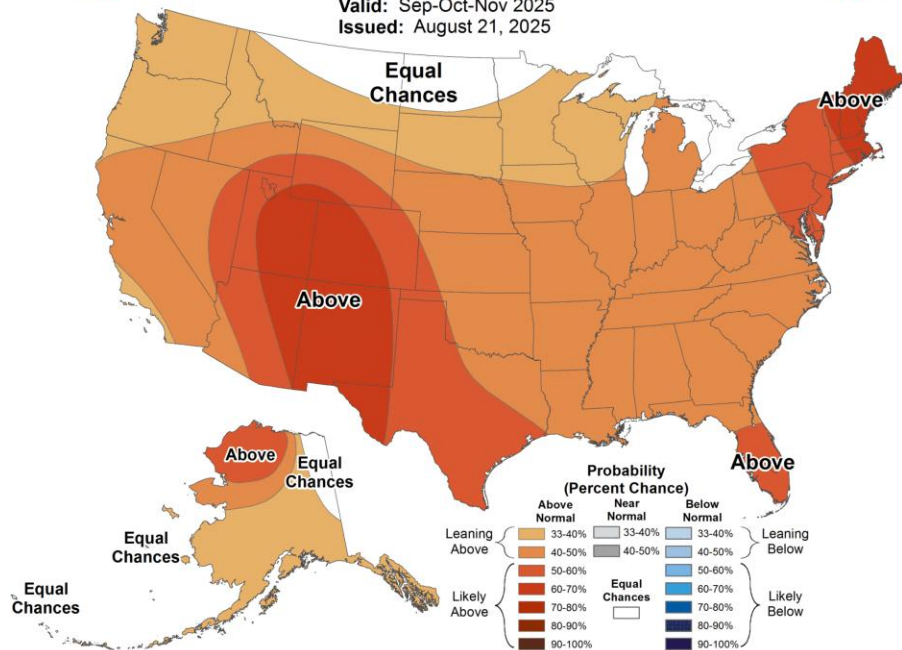
Monthly Precipitation Outlook

Valid: September 2025
Issued: August 21, 2025



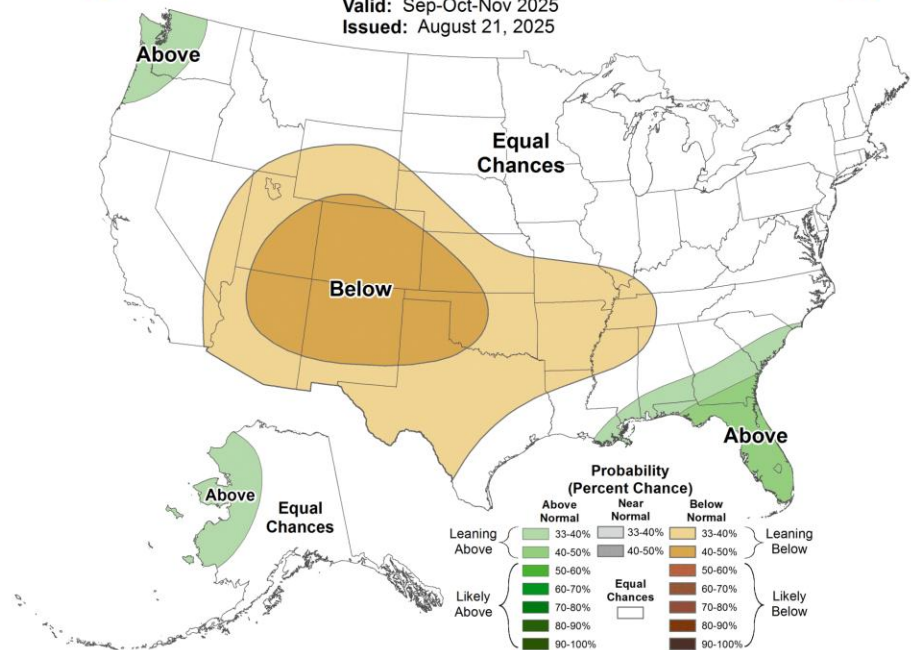
Seasonal Temperature Outlook

Valid: Sep-Oct-Nov 2025
Issued: August 21, 2025



Seasonal Precipitation Outlook

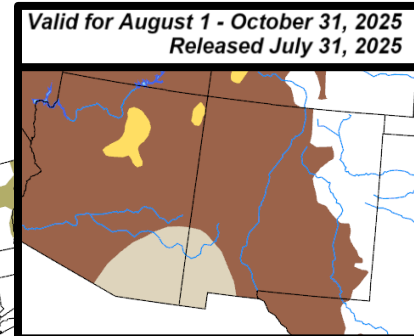
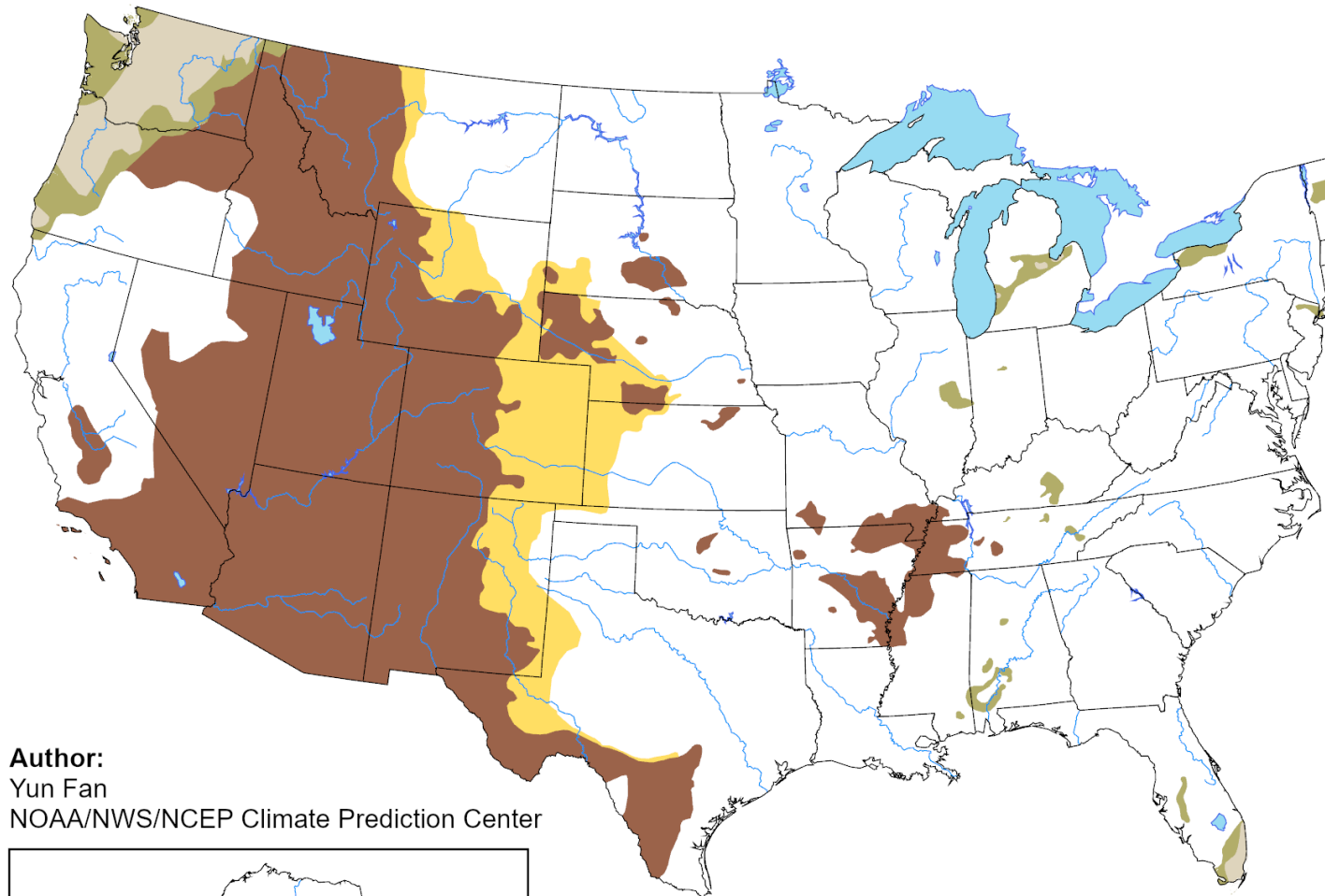
Valid: Sep-Oct-Nov 2025
Issued: August 21, 2025



U.S. Seasonal Drought Outlook

Drought Tendency During the Valid Period

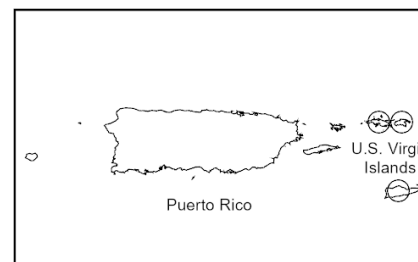
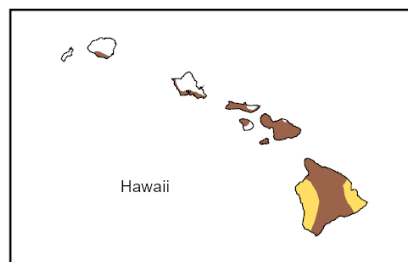
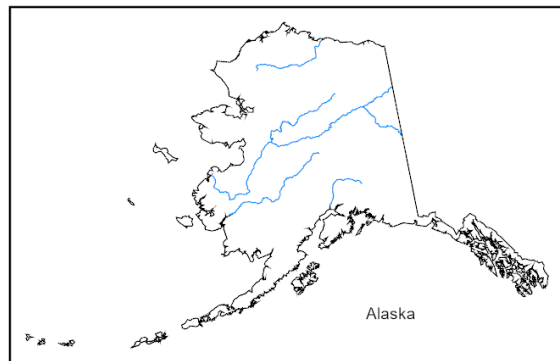
Valid for August 21 - November 30, 2025
Released August 21, 2025








Depicts large-scale trends based on subjectively derived probabilities guided by short- and long-range statistical and dynamical forecasts. Use caution for applications that can be affected by short lived events. "Ongoing" drought areas are based on the U.S. Drought Monitor areas (intensities of D1 to D4).

NOTE: The tan areas imply at least a 1-category improvement in the Drought Monitor intensity levels by the end of the period, although drought will remain. The green areas imply drought removal by the end of the period (D0 or none).

Author:
Yun Fan
NOAA/NWS/NCEP Climate Prediction Center



-  **Drought persists**
-  **Drought remains, but improves**
-  **Drought removal likely**
-  **Drought development likely**
-  **No drought**



<https://go.usa.gov/3eZ73>

SWA Burn Period Forecast at RAWs: 08-21-2025 to 08-27-2025

