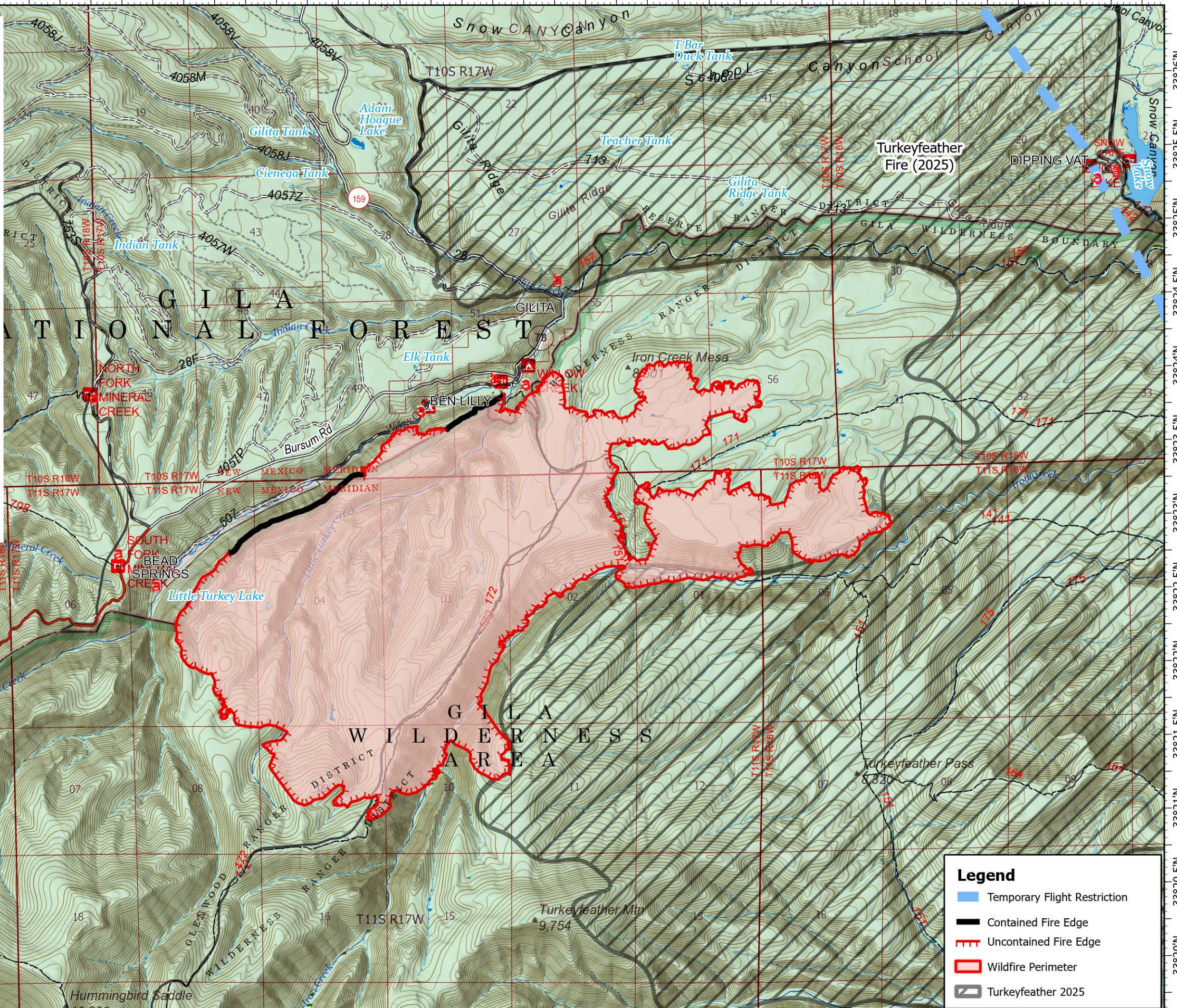
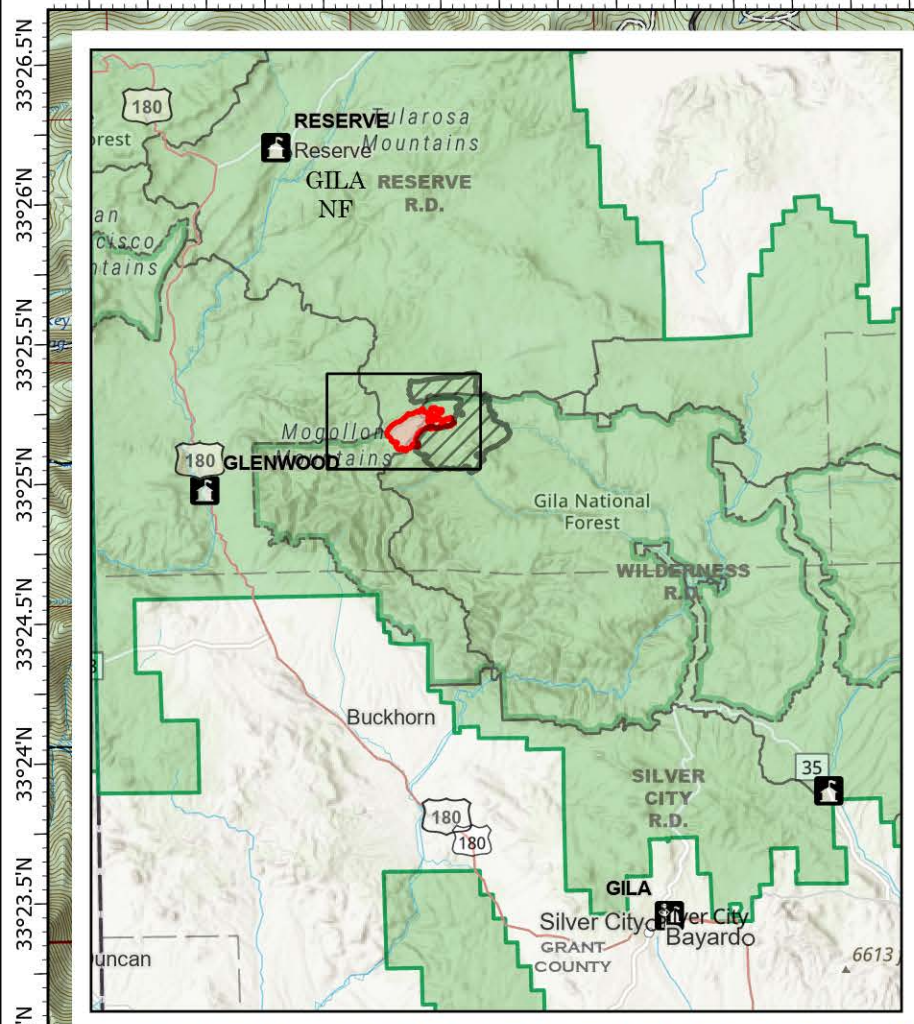


108°42.5'W 108°42'W 108°41.5'W 108°41'W 108°40.5'W 108°40'W 108°39.5'W 108°39'W 108°38.5'W 108°38'W 108°37.5'W 108°37'W 108°36.5'W 108°36'W 108°35.5'W 108°35'W 108°34.5'W 108°34'W 108°33.5'W 108°33'W 108°32.5'W 108°32'W 108°31.5'W 108°31'W 108°30.5'W 108°30'W



# Public Information

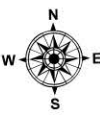
## Hummingbird

### NM-GNF-000155

#### 05/01/2026 Day

5274 acres at 4/30/2026 1:47 PM

1:50,000 | Gila Type 3 Team | 5/1/2026 09:16  
Acres from IR and GPS  
North American 1983 Datum, Lat/Long Grid



**Legend**

- Temporary Flight Restriction
- Contained Fire Edge
- Uncontained Fire Edge
- Wildfire Perimeter
- Turkeyfeather 2025

108°42.5'W 108°42'W 108°41.5'W 108°41'W 108°40.5'W 108°40'W 108°39.5'W 108°39'W 108°38.5'W 108°38'W 108°37.5'W 108°37'W 108°36.5'W 108°36'W 108°35.5'W 108°35'W 108°34.5'W 108°34'W 108°33.5'W 108°33'W 108°32.5'W 108°32'W 108°31.5'W 108°31'W 108°30.5'W 108°30'W